

DANGER: TO REDUCE RISK OF BURNS, ELECTRIC SHOCK, FIRE, AND PERSONAL INJURY, THIS PRODUCT MUST BE USED IN ACCORDANCE WITH THE FOLLOWING INSTRUCTIONS:

1. READ ALL INSTRUCTIONS
2. Keep away from children and animals.
3. The metal mesh surface contains high voltage when powered on. Do not touch the metal mesh with your hand, or any part of your body.
4. Do not use this product near flammable gas and/or objects.
5. Do not allow and conductive object such as metal to touch the metal mesh.
6. Do not alter or attempt to repair the product. Doing so can cause electric shock
7. Do not use water or wet towels to clean the product. Use dry brush to brush any dirt or particles.
8. Store in a cool dry place with low humidity.
9. Do not insert any objects into the metal mesh. This can cause the product to get damaged, and cause injury.

This device complies with Part 15 of the FCC Rules. Operation is subject to the following two conditions:

- (1) this device may not cause harmful interference, and
- (2) this device must accept any interference received, including interference that may cause undesired operation.

NOTE: This equipment has been tested and found to comply with the limits for a Class B digital device, pursuant to Part 15 of the FCC Rules. These limits are designed to provide reasonable protection against harmful interference in a residential installation. This equipment generates, uses and can radiate radio frequency energy and, if not installed and used in accordance with the instructions, may cause harmful interference to radio communications.

However, there is no guarantee that interference will not occur in a particular installation. If this equipment does cause harmful interference to radio or television reception, which can be determined by turning the equipment off and on, the user is encouraged to try to correct the interference by one or more of the following measures:

- Reorient or relocate the receiving antenna.
- Increase the separation between the equipment and receiver.
- Connect the equipment into an outlet on a circuit different from that to which the receiver is connected.
- Consult the dealer or an experienced radio/TV technician for help.

ALLSTAR
INNOVATIONS[®]

©2021 ALLSTAR INNOVATIONS

Magic Mesh[®] is a trademark of ALLSTAR INNOVATIONS

Distributed by ALLSTAR INNOVATIONS

Hawthorne, NY 10532

Made in China.

MAGIC MESH[®]

Bug Zapper



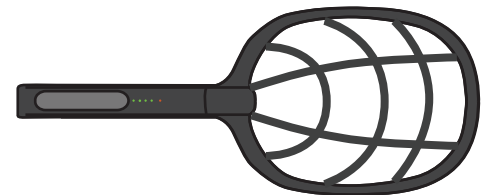
TIPS

1. If the product was not used for more than 3 months, recharge the unit to full power.
2. This product contains a built in low voltage protection feature. When battery capacity reaches 25% the product will conserve power and will not turn on. At this time, please recharge the product to full power.

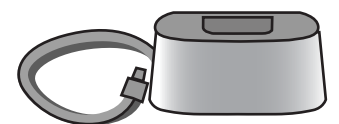
For Tips, Instructional Videos,
Additional Accessories, And
The Latest Products News,
Please Visit www.MagicMeshTips.com

Contents

1X Bug Zapper

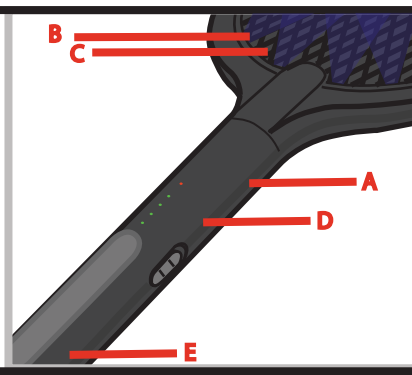


1X Charging Base
with USB power cord



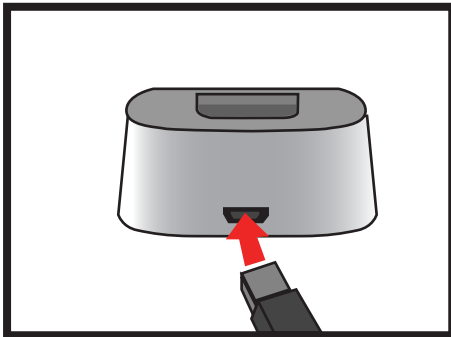
Features

- A)** After the electric mosquito swatter is stopped, it has the function of automatically eliminating the residual electricity of the metal mesh.
- B)** The product is equipped with 6 mosquito trapping purple lights, with selected wavelength is 360-400nm.
- C)** The grid voltage is around 2500V when working.
- D)** The product has overcharge, overdischarge, overcurrent, and short circuit protection, etc. to accurately detect the charging voltage to ensure the safety of charging.
- E)** The product is powered by an 18650 lithium battery with a capacity of 1200mAh.

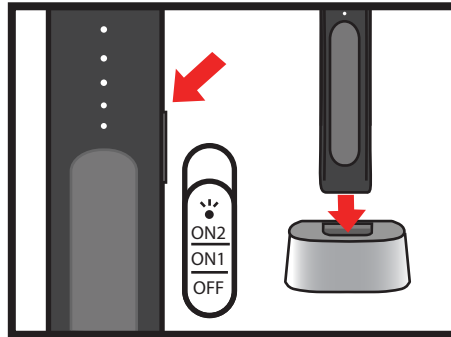


Charging Instructions

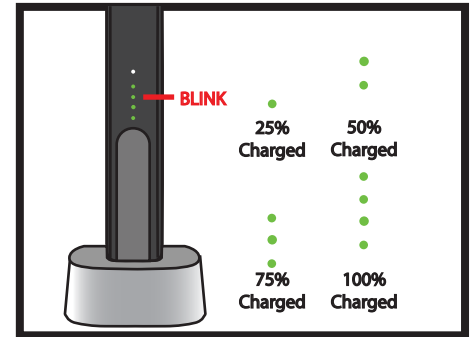
NOTE: Charge product 4-6 hours before first use.



1. When charging, insert the USB plug of the 5V charger into the Micro USB input socket on the product charging base.

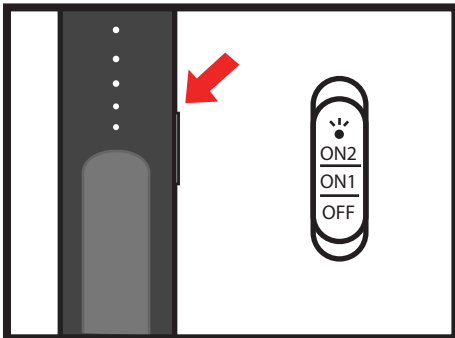


2. Push the power switch to the OFF position, and place the base of the Magic Mesh™ bug zapper into the charging base.

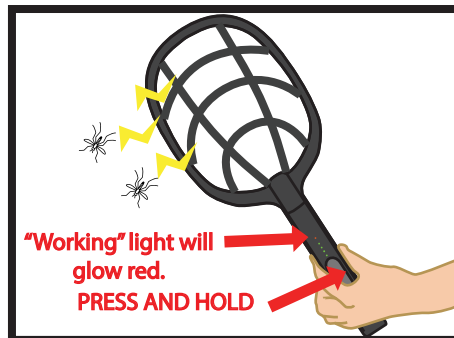


3. The LED's will start to blink. The power is 25% when one light is solid, the power is 50% when two lights are solid, the power is 75% when three lights are solid, and the product is fully charged when all four lights are solid.

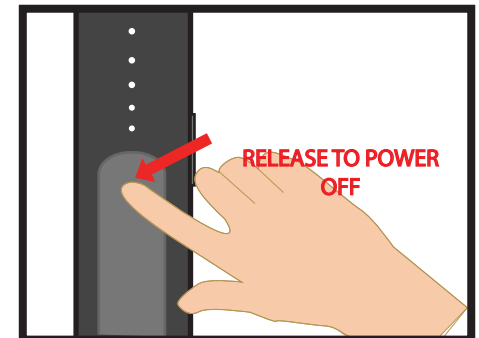
Standard Handheld Function



1. Push the power switch on the right side of the product to the ON1 position.



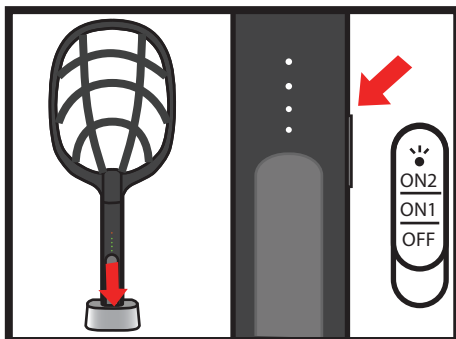
2. Press and hold the high voltage button. The red high voltage will turn on and the product is ready to use.



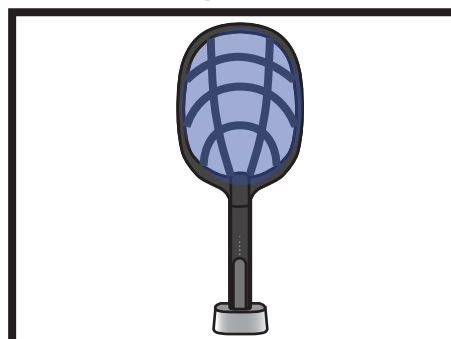
3. Once the high voltage button is released, the high voltage function turns off.

WARNING: There is still residual voltage on the metal mesh after releasing the high voltage button. Do not touch the metal mesh for 10 seconds after releasing the high voltage button.

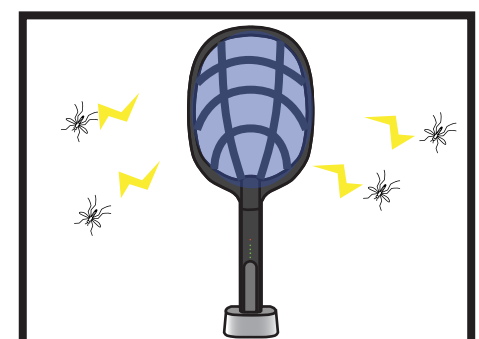
Anti Mosquito Function



1. Place the base of the Magic Mesh™ bug zapper into the charging base, and push the power switch on the right side of the product to the ON2 position.



2. The Magic Mesh™ bug zapper will glow blue, and the high voltage will be on constantly without holding down the high voltage button. **WARNING: At this point, do not touch the metal mesh!**



4. Mosquitos and other harmful insects will be attracted to the UV lights emitting from the Magic Mesh™ bug zapper, and will be exterminated instantly upon contact.